

Welcome

Class of
2027

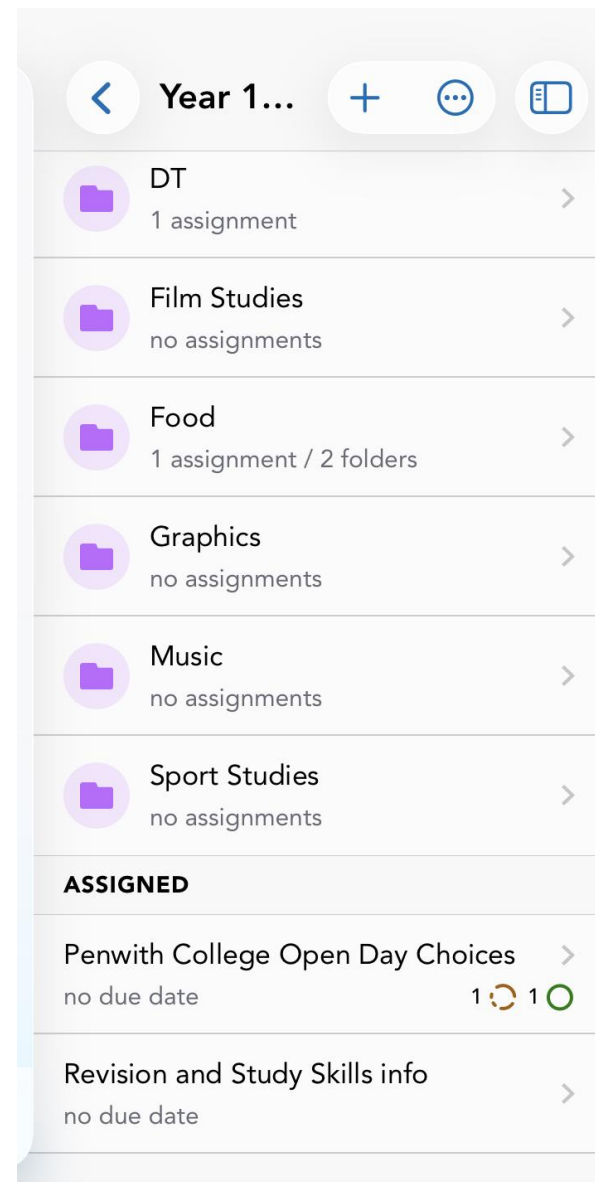
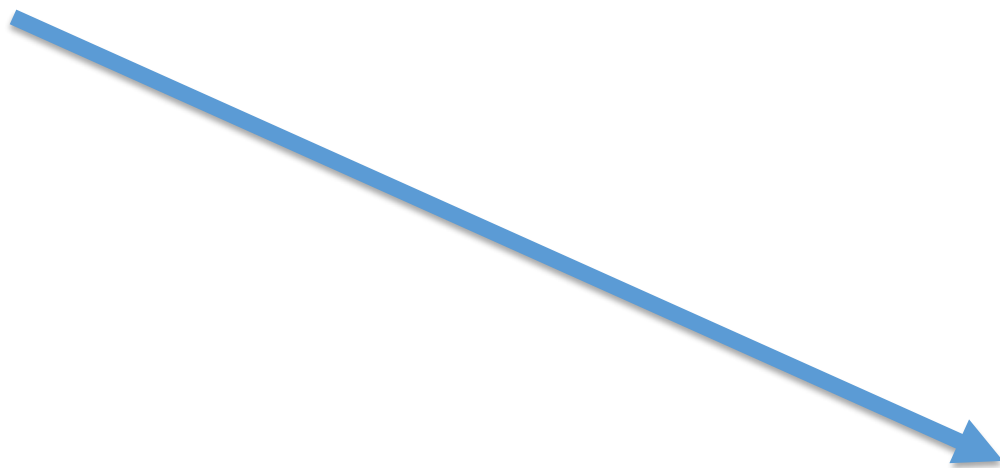
**SHOWBIE REVISION SPACE
E2K27H**



Empowering students to achieve their best through academic excellence, personal growth, and a vibrant, caring community.



The resources from this evening are in your Year 10 Revision showbie class **HERE**

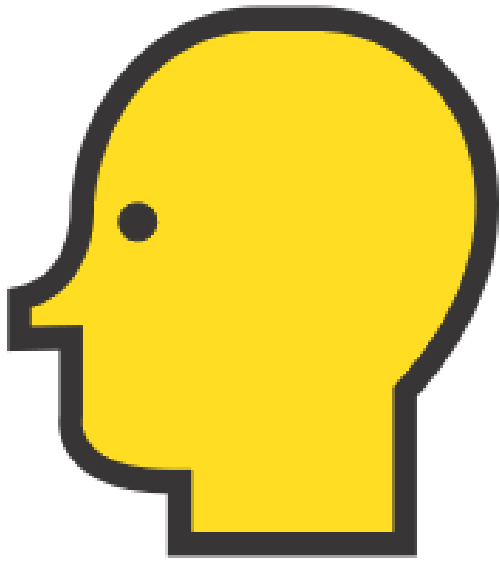
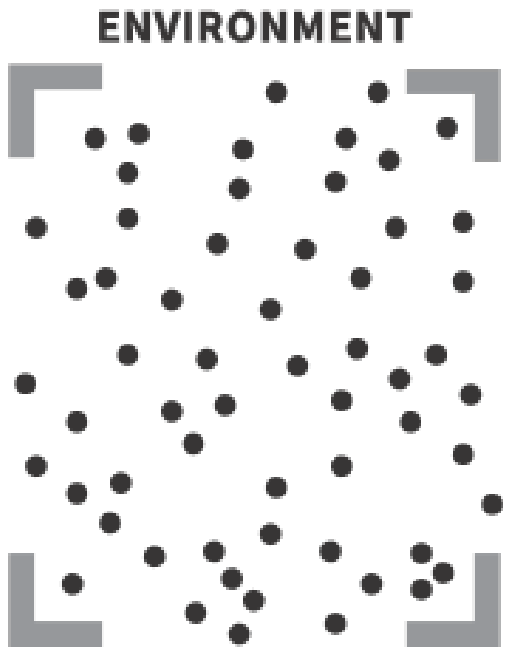


Empowering students to achieve their best through academic excellence, personal growth, and a vibrant, caring community.

W/C 1st June (A)	Session 1	Session 2	Session 3	Session 4	W/C 15th June (A)	Session 1	Session 2	Session 3	Session 4
Monday 1st			10C Art		Monday 15th				
Tuesday 2nd	10A ART				Tuesday 16th	History 10A (MMK)	10T/10S PE		History 10B (MMK)
Wednesday 3rd	10C Art	10A Art			Wednesday 17th	GEOGRAPHY ASSESSMENT - GYM			MATHS (NON-CALC ASSESSMENT - GYM)
Thursday 4th					Thursday 18th	SCIENCE (BIOLOGY PAPER 1) - GYM			
Friday 5th					Friday 19th	ENGLISH ASSESSMENT - GYM		10C/DT - D&T	10B/DT - D&T
W/C 8th June (B)	Session 1	Session 2	Session 3	Session 4	W/C 22nd June (B)	Session 1	Session 2	Session 3	Session 4
Monday 8th			10C Geography		Monday 22nd	English Spoken Language Recordings 10E1	10E/10V PE.	10C/DR	
Tuesday 9th	History 10B (MMK) 10B Geography	10M1 & 10M2 (MATHS CALC PAPER) 10S4 Chemistry Paper 1	History 10A (MWI) 10A/FT - Food 10A Geography	Science Chemistry Paper 1 (10S1/2/3)	Tuesday 23rd	English Spoken Language Recordings 10E4			
Wednesday 10th		10M3 & 10M4 (MATHS CALC PAPER)			Wednesday 24th	English Spoken Language Recordings 10E3, French 10B		10C/FILM	
Thursday 11th		10C Geography P2	10A Geography P2		Thursday 25th				
Friday 12th		10B Geography P2			Friday 26th	COLLEGE TASTER DAY			



Empowering students to achieve their best through academic excellence, personal growth, and a vibrant, caring community.



Empowering students to achieve their best through academic excellence, personal growth, and a vibrant, caring community.



EFFORT



KINDNESS



COMMUNITY



ASSESSMENTS

At St Ives School We...

STUDY HARD

Organise ourselves, we have a revision plan and we start early.

USE EVERY MINUTE

We think hard, we write until the end, we fight for every mark

ARE READY

We have the right equipment, we are on time and we are focused

LOOK AFTER OURSELVES AND EACH OTHER

We sleep well, we eat well and we plan in rewards.



Empowering students to achieve their best through academic excellence, personal growth, and a vibrant, caring community.



showbie

SHOWBIE REVISION SPACE

E2K27H



showbie



OCR

Art
Computer science
Drama
Music
Sports Studies

Eduqas

Film Studies

BTEC

Dance

AQA

English
Maths
Science
Geography
French
DT
Food tech
Further Maths (L2)

Edexcel

History

Empowering students to achieve their best through academic excellence, personal growth, and a vibrant, caring community.

Revision Strategies

Self quizzing



Teaching someone else



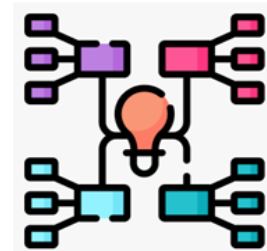
Practice papers



Flash cards



Mind Map





Empowering students to achieve their best through academic excellence, personal growth, and a vibrant, caring community.

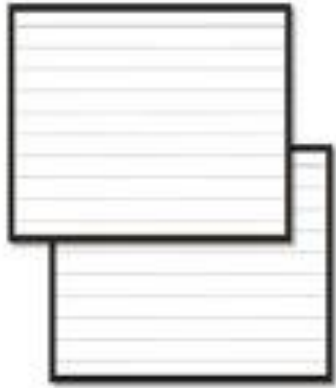
Everyone has a good memory

- There is no such thing as a bad memory
- Think about your favourite films or song – do you know the words? Why?
- If you can't remember something, it's because you haven't had enough exposure to the information OR because you haven't actively thought about it, not because you don't have a good memory
- So you just can't remember it YET!





HYPOTHESIS



CALCULATE



CONCLUSION



What motivates you?

- Revision is really hard so you need motivation
- Think now about **what 'doing well' looks like for you** in your exams
- Think about **why** you want to do well – do you really feel this or have you just heard people say it?
- Think about **who** you want to do well for





Mock results and data analysis

Analysing mock exam data to identify gaps, personalise intervention, and refine teaching for optimal outcomes in final exams.

Delivering well-structured lessons focused on key exam content, skills, and application to ensure maximum progress and understanding.

High Quality Lessons

Offering tailored workshops and strategies to help students manage exam-related stress and maintain focus during exam periods.

External support and resources

Exam anxiety management

Accessing external tutoring services and revision workshops to provide personalised and expert exam preparation support for students.

Parental involvement (series of evenings)

Hosting parent evenings to equip families with tools to support revision, exam preparation, and strategies to reduce student stress.

Organised revision classes during school holidays to keep momentum, offering focused support on key subjects and exam techniques.

Holiday revision sessions

Utilising tutor time to share revision techniques, time management tips, and organisational strategies to enhance exam readiness.

Tutor time engagement- Tips and Tools revision strategies

Bespoke timetable adjustments on the run up to exams

Adjusting school timetable to allow targeted revision, intervention sessions, and focused preparation for final exams.

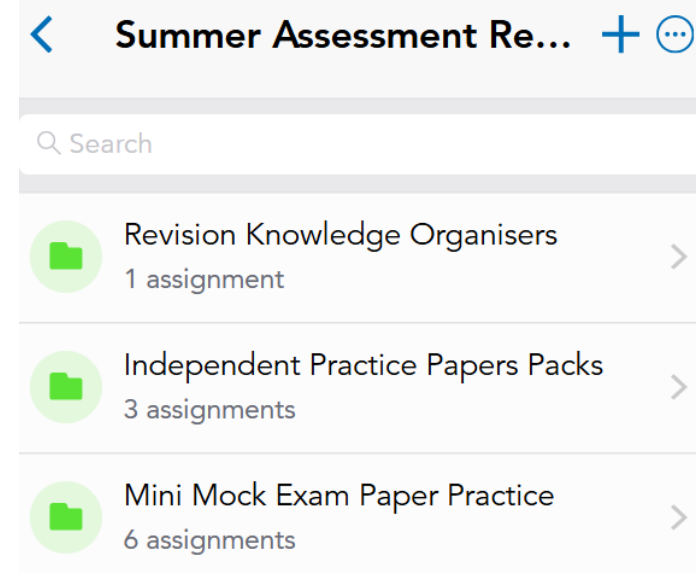
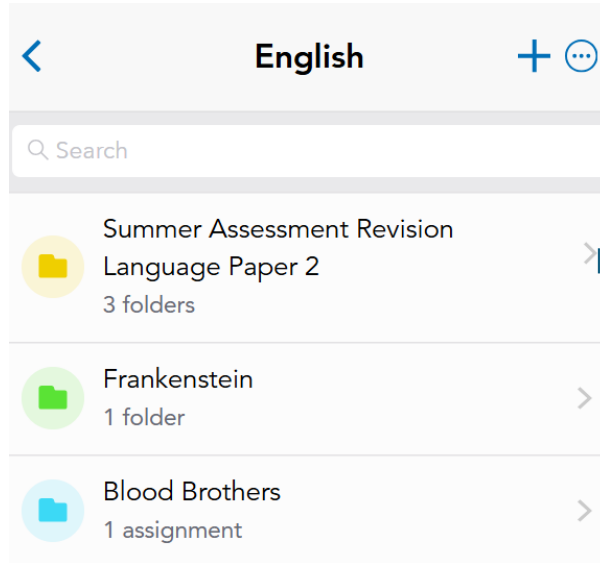
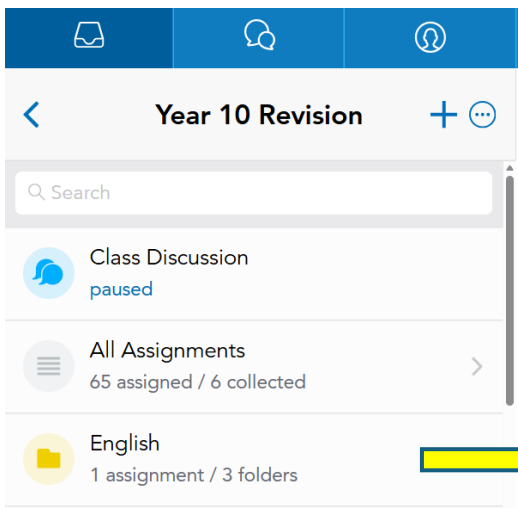
Study Support sessions- Period 5

Extra study sessions to provide structured revision opportunities, ensuring disadvantaged students receive additional support outside regular lessons.

Offering structured well-being support with rewards and recognition to maintain morale, motivation, and mental health during exam season.

Well-being support

Empowering students to achieve their best through academic excellence, personal growth, and a vibrant, caring community.



AQA English GCSE

Exam is a full English Language Paper 2 in the hall (1hr 45 mins).

This exam has two sections:

- Section A: Reading – students will need to read two non-fiction texts and analyse and compare language choices.
- Section B: Writing – students will need to write their own persuasive piece which could be a letter/article/speech.

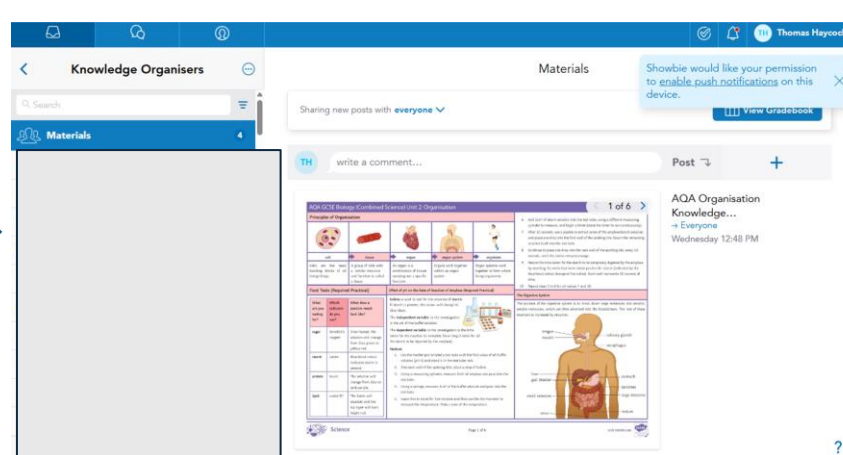
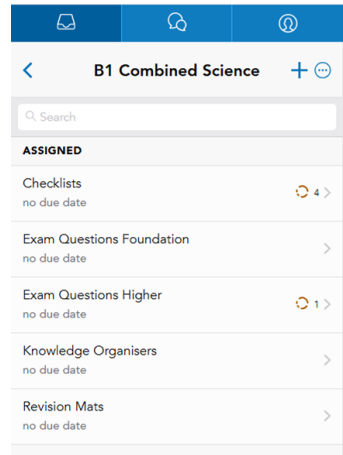
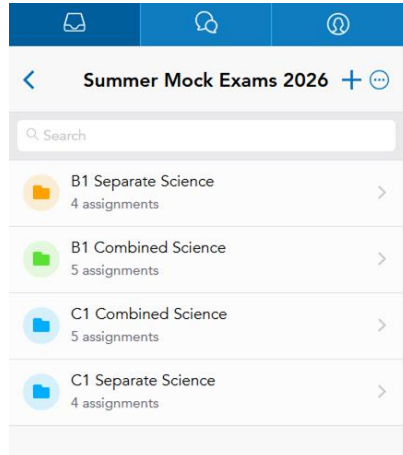
Each week homework is a revision homework:

On the Year 10 Revision Showbie – this weeks (and for half term) is a Mini-Mock Exam Paper Practice. They will need to complete Mini-Mock 1

Year 10 English Language Paper 2 Revision Plan

Timeline Overview

Week	Task	Completed
Week 1 (this week-Half term)	Mini Mock 1	<input type="checkbox"/>
Week 2	Mini Mock 2	<input type="checkbox"/>
Week 3	Mini Mock 3	<input type="checkbox"/>
Week 4	Mini Mock 4	<input type="checkbox"/>



AQA Science GCSE - Chemistry

Exam is a full Chemistry Paper 1 in the hall.
Combined Science will be 70 mins. The Separate Science paper will be 100 mins.

The topics covered are:

Atomic Structure / Bonding and Structure /
Quantitative Chemistry / Chemical Changes /
Chemical Energy

On the Year 10 Revision Showbie – There is a
(very) detailed Checklist, Knowledge Organisers,
Revision Mats and an Example Paper

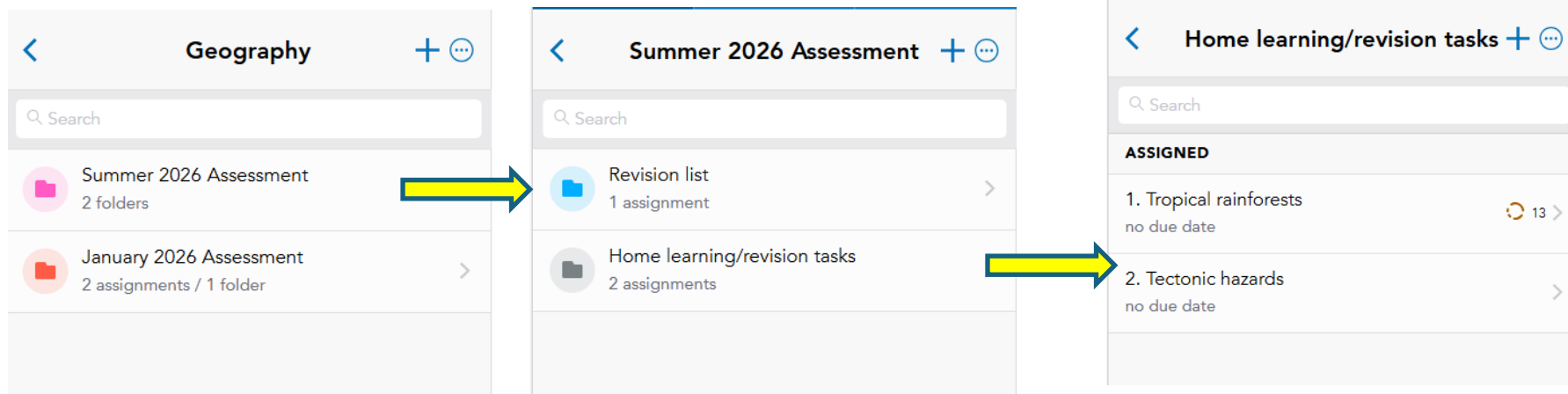
AQA Science GCSE - Biology

Exam is a full Biology Paper 1 in the hall. Combined Science will be 70 mins. The Separate Science paper will be 100 mins.

The topics covered are:

Cell Biology / Organisation / Bioenergetics / Infection and Response

On the Year 10 Revision Showbie – There is a
(very) detailed Checklist, Knowledge Organisers,
Revision Mats and an Example Paper



AQA Geography GCSE

Exam is a full Paper 1 in the hall (1.5 hours) with three topics:
 Natural Hazards – tectonic hazards, tropical storms and climate change

The Living World- Tropical rainforests and hot deserts

Physical Landscapes – coasts and rivers

Each week homework is a revision homework.

On the Year 10 Revision Showbie – this weeks (and for half term) is tectonic hazards. If you want to look at other areas look at the revision list and treat this as a working document – tick off what you have revised

AQA GCSE Geography – Tectonic Hazards Revision Tasks

Use the websites provided and the lessons on Showbie in the folder Natural Hazards to complete revision tasks. Remember, if conducting own research ensure to include "AQA GCSE Geography" to refine search

Revision tasks	Useful websites	Check when complete
<p>Task 1 — Create a labelled diagram of the Earth's structure</p> <p>Draw and label:</p> <ul style="list-style-type: none"> • Crust • Mantle • Outer core • Inner core • Convection currents <p>Then explain in 3-4 sentences how convection currents drive plate movement.</p>	<p>The Earth's structure and plate tectonics - Plate margins and plate tectonics - AQA - GCSE Geography Revision - AQA - BBC Bitesize</p> <p>Structure of the Earth - Internet Geography</p>	
<p>Task 2 — Summarise the theory of plate tectonics</p> <p>Write a 100-word summary explaining:</p> <ul style="list-style-type: none"> • What tectonic plates are • How they move • Why this movement causes earthquakes and volcanoes 	<p>Plate Tectonics - Internet Geography</p>	

Edexcel History GCSE

Exam is a slightly shortened Paper 1 on Whitechapel (including source work and crime and punishment (on Tuesday 9th June) then a Paper 2 first half only on Anglo-Saxon and Norman England (on Tuesday 16th June)

On the Year 10 Revision Showbie – start with the 5 focus and starting point activities if you aren't really sure how to revise. Use the 100 fact challenge resource to complete revision homework. There is also a Whitechapel checklist and main points at the bottom of the showbie



History

ASSIGNED

- 12 mark answer paragraph examples
no due date
- 5 focus Anglo-Saxon summary
no due date
- 5 focus Early Modern crimes - witchcraft
no due date 5
- 5 focus Hereward the Wake June revision
no due date
- 5 focus Marcher Earldoms June revision
no due date
- 5 focus Norman Changes
no due date 2

Assessed Components:

- **50% NEA**
(Non Exam Assessment)
- **50% Exam**

Assessment of components start from:
June in Year 10 and *throughout*
Year 11

The NEA
(50%):

- **Project based – themed outcome**
TOPICS RELEASED BY AQA - 1st JUNE
- **35-40 Hours of Guided Study in lessons**
- **100 Marks over six sections:**

DEADLINES:

A: Investigation (10 Marks)	- Early September 2026
B: Design Brief & Specification (10 Marks)	- Late September 2026
C: Generating Design Ideas (20 Marks)	- Early November 2026
D: Developing Design Ideas (20 Marks)	- Early January 2027
E: Realising Design Ideas (20 Marks)	- Early March 2027
F: Analysing & Evaluating (20 Marks)	- Early April 2027

The Exam (50%):

- **2 Hour Paper – *May/June 2027***
- **100 marks over three sections...**

Section A: Core Technical Principles (20 Marks)

General knowledge about ALL aspects of the Subject

Section B: Specialist Technical Principles (30 Marks)

In depth knowledge about 1-2 material areas (eg Timber &

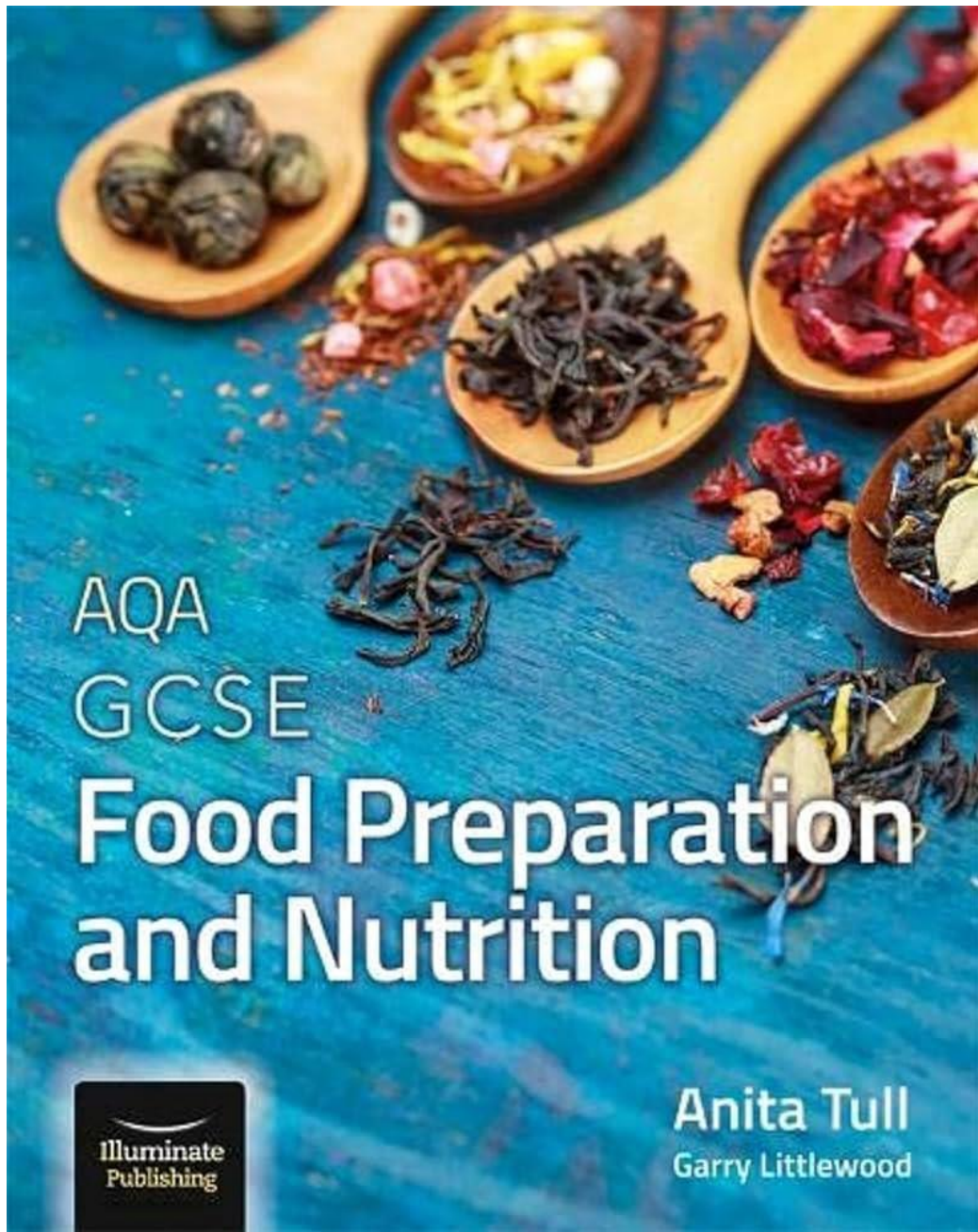
Section C: Designing & Making Principles (50 Marks)

Detailed understanding about the wider world of designing &

making
Up to 20% of the exam will be Maths based questions linked to D&T contexts.

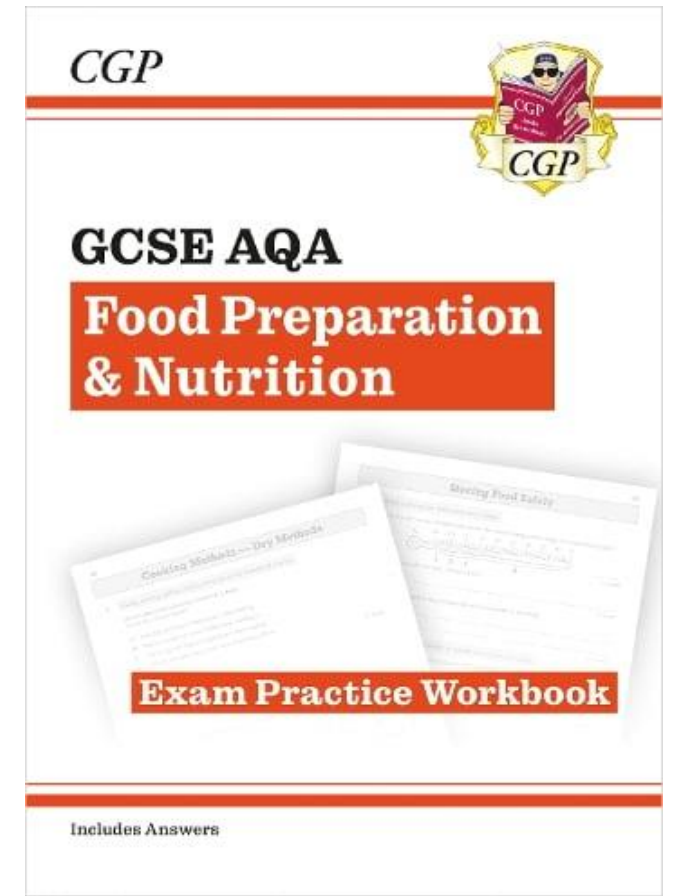
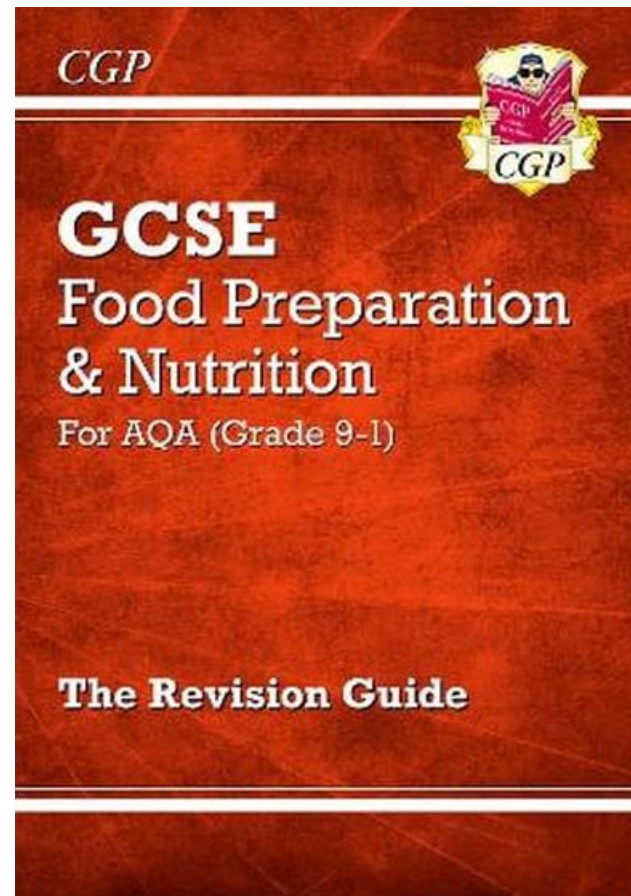
Mock Exam's – Y10 Summer + Y11 Autumn

Revision Materials – Showbie / CGP Revision Guides / Seneca Learning



AQA GCSE Food Preparation and Nutrition

CGP Revision and Exam Practice Books available to buy through St Ives School Gateway or on Amazon.



Five Core Topics:

Nutrition & Health

Food Provenance

Food Science

Food Safety

Food Choice

15% - NEA 1 Food Investigation

30 marks- 10 hours

Written report 1500-2000 words + photographic evidence

Working characteristics , functional and chemical properties of ingredients

**Tasks released September
of Year 11**

35% - NEA 2 Food Preparation Task

70 marks - 20 hours

**Portfolio of evidence of planning, preparation and cooking
3 dishes.**

3 hour final practical assessment to cook 3 dishes.

**Tasks released November
of Year 11**

EXAM (50%) 100 Marks

1hr 45 minutes

Theoretical Knowledge

Section A: 20 Marks Multiple Choice

Section B: 80 Marks - 5 Questions - Analysis/Descriptive

SEPTEMBER
NEA 1 Food Science Investigation 15% GCSE Grade
OCTOBER HALF TERM
NEA 1 Deadline REVISION
MOCK EXAMS
MOCK EXAMS
NEA 2 Food Preparation Task 35% GCSE Grade
CHRISTMAS HOLIDAYS

NEA 2 3 x assessed practical cooks In lesson time
FEBRUARY HALF TERM
NEA 2 PRACTICAL EXAMS - 3 hours
MOCK EXAMS
MOCK EXAMS
NEA 2 NEA 2 Deadline
EASTER HOLIDAYS
REVISION

REVISION GCSE EXAMS	
MAY HALF TERM	
REVISION GCSE EXAMS	
8th-12th June	FOOD EXAM
SUMMER HOLIDAYS	

Example dates from 2025-26

NEA 1 – Food Science Investigation (15%)
Deadline: 3rd-7th Nov

Autumn Mock Exams: Monday 10th November – Friday 21st November

NEA 2 – Food Preparation Task (35%)
3 Hour Practical exams run:
Monday 23rd Feb – Friday 27th Feb.
Deadline: Wednesday 23rd April

Spring Mock Exams: Monday 3rd March – Friday 13th March.

Food Written Exam (50%) Thursday 11th June PM

Year 11 GCSE Food Intervention – Every Tuesday until 4:15pm

GCSE ART AND DESIGN: Fine Art Exam Board -OCR

ASSESSMENT OBJECTIVES:

A01- Develop your ideas informed by artists

25%

A02- Refine your ideas through experimentation

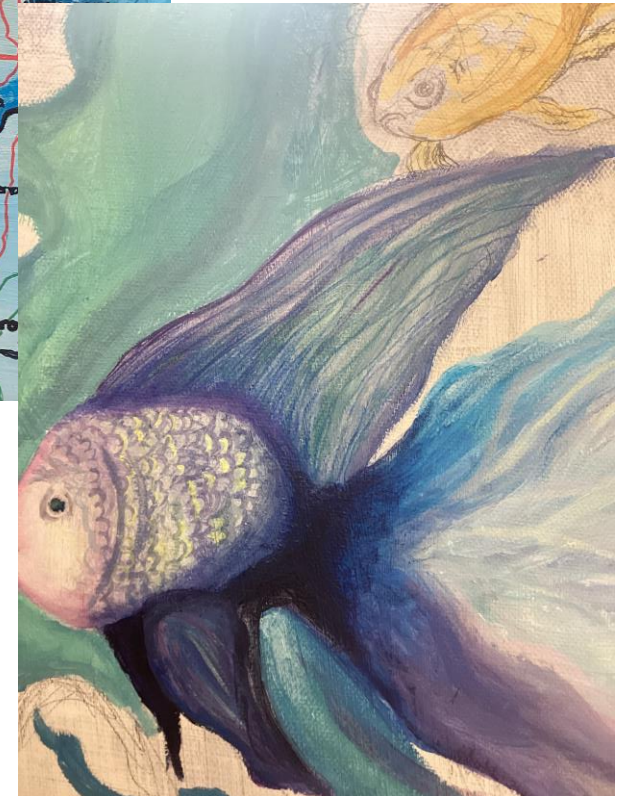
25%

A03- Record your ideas clearly in your sketchbook and
in your annotation/ writing

25%

A04 — Present a personal and meaningful response

25%



Course breakdown

Unit 1

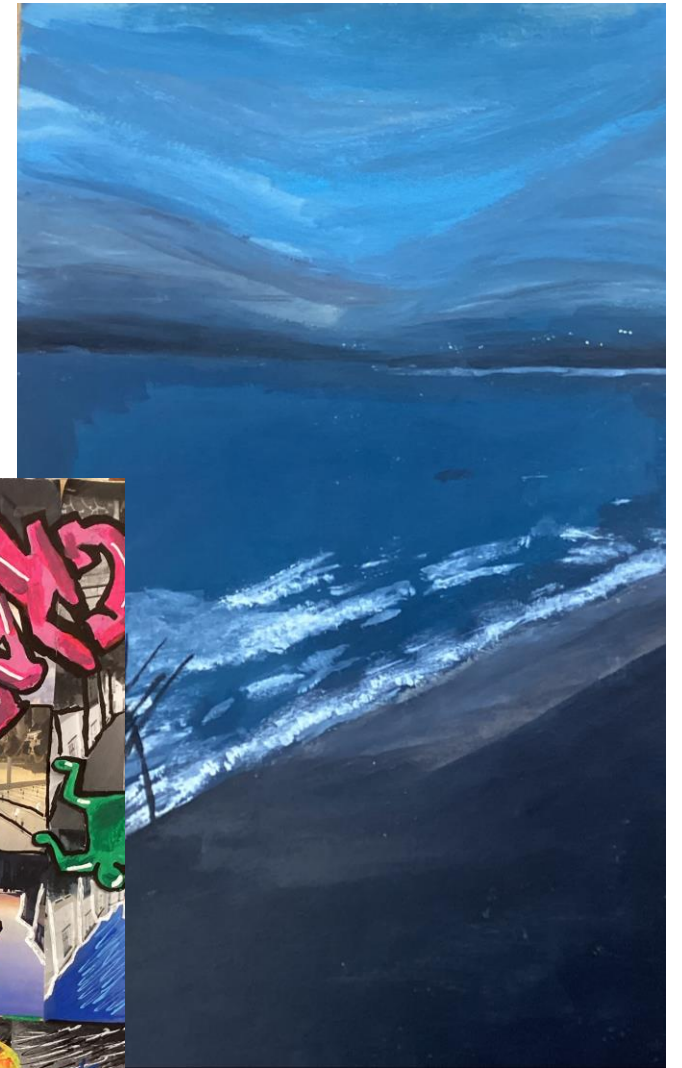
PORTFOLIO 60%

Sep 2025- December 2026

Unit 2- EXTERNALLY SET

TASK 40%

December 2026- June 2026



Year 10 Drama Revision

Section A Only- Blood Brothers- Monday 22nd June lesson 3

On the 'Year 10 Showbie' Revision folder are 2 revision booklets and 'Knowledge Organiser'. One revision booklet can be filled in.

I have also uploaded a past paper – December 2021

Devising Drama 01/02 Coursework Information (30%) – separate email sent

Section 1 Deadline – Thursday 21st May

Section 2 Deadline- Thursday 9th July

Practical and Section 3 completed in the Autumn Term of Year 11

Subject	Exam Board	June Assessment	Revise using
English	AQA	Language Paper 2	Year 10 Showbie folder - revision list and tasks
Maths	AQA	Paper 1 (non-calc) and Paper 2 (calc)	Revision lists shared in Showbie as well as practice paper
Science	AQA	Paper 1 Biology and Paper 1 Chemistry	Revision Lists, Knowledge Organisers, Revision Mats and Past Paper shared in Year 10 revision folder
History	Edexcel	Paper 1 Crime and Punishment and Paper 2 Anglo-Saxon and Norman England	Year 10 revision showbie and Monday after school revision sessions with MWI
Geography	AQA	Paper 1	Year 10 Showbie folder - revision list and tasks
French		Reading, writing, speaking and listening	Year 10 Showbie folder - revision list and tasks
DT	AQA	Past paper	Year 10 Showbie folder - revision list and tasks
Art		Drawing activity from a primary photo	Practise sketches and plans, review formal elements used in drawing skills
Graphics		Practical	No revision needed
Drama		Section A only	Year 10 Showbie folder - revision list and tasks
Food	AQA	Food Science End of Unit Test	Year 10 Showbie folder - revision list and CPG revision guide
Computer Science		No formal assessment	N/A
Sports Studies	OCR	N/A- students completing coursework units in year 10. Don't start year 11 exam content until October half term.	N/A
Film Studies		Practice exam question	Year 10 Showbie folder - revision list and tasks
Dance		No formal assessment as coursework has been completed	N/A

Post 16 Pathways



Empowering students to achieve their best through academic excellence, personal growth, and a vibrant, caring community.



What are the Post-16 requirements?

- Young people are required by law to stay in education or training until aged 18.
- If students do not gain a Grade 4 at English or Maths in their GCSEs, then they will need to continue to work towards achieving this as part of their Post-16 provision.
- Students can apply for as many different pathways, establishments or courses as they would like. They do not have to make their final decision until after they have received their GCSE results.
- The application process is between the student and the establishment.

Empowering students to achieve their best through academic excellence, personal growth, and a vibrant, caring community.

What's your next move?

Compare your options after GCSE

QUALIFICATION	DESCRIPTION	LENGTH OF TIME	ASSESSMENT	LEVEL OF STUDY	AWARDS UCAS POINTS?	ENTRY REQUIREMENTS	WORK EXPERIENCE	WHAT DOES IT LEAD TO?
APPRENTICESHIPS <small>www.apprenticeships.gov.uk</small>	A real job with training and a salary.	1 Year minimum	Apprenticeship dependent (inc. demonstrations, presentations and/or exams)	2/3 With the possibility to progress to higher apprenticeships up to level 7	No	<ul style="list-style-type: none"> - Employer dependent - Age 16+ - Evidence of interest and ability to complete 	Yes (paid job, with at least 20% off the job training)	<ul style="list-style-type: none"> - Higher level or degree apprenticeship - University/College - Work
A LEVELS	An academic qualification, similar in style to GCSEs, that prepares you for further study.	2 Years	Mostly exams at the end of the course	3	Yes	For individual schools and colleges to decide (commonly 5 GCSEs at grades 4 and above)	No	<ul style="list-style-type: none"> - Apprenticeship - University/College - Work
T LEVELS <small>www.tlevels.gov.uk</small>	A technical study programme, equivalent to 3 A levels, with an industry placement that makes up 20% of the course. T Levels are designed to give you the skills that employers need.	2 Years	Exams, projects and practical assignments	3	Yes	Set by each school/college	Yes (80% classroom, 20% work)	<ul style="list-style-type: none"> - Apprenticeship - University/College - Work
TECHNICAL/VOCATIONAL QUALIFICATIONS <small>(e.g. some Pearson BTECs, Cambridge Technicals, City and Guilds Diplomas, AQA Technical, VET Diplomas and many others)</small>	Qualifications which teach you how to do tasks specifically related to the industry and role you want to be in.	Course dependent	Course dependent (coursework & exams)	1+	Some (course & awarding organisation dependent)	Course dependent	Course dependent	<ul style="list-style-type: none"> - Apprenticeship - College - Work
APPLIED QUALIFICATIONS <small>(e.g. some Pearson BTECs and some Cambridge Technicals, BTEC Diplomas, AQA Certificates, NCFE Applied and many others)</small>	Qualifications that prepare you for further study by combining academic learning with practical skills to give you a broad overview of working in a sector.	Course dependent	Course dependent (coursework & exams)	3	Yes	Set by each school/college	Course dependent	<ul style="list-style-type: none"> - Apprenticeship - University/College - Work
TRAINEESHIPS <small>www.gov.uk/government/collections/traineeships</small>	A work focused study programme that prepares you for an apprenticeship or work.	6 Weeks - 6 Months	A formal job or exit interview with written feedback. Coursework and exams are course dependent	N/A	No	Have little to no work experience and qualified below Level 3	Yes	<ul style="list-style-type: none"> - Apprenticeship - Work



Levels are designed to indicate the complexity of qualifications and apprenticeships, allowing people to draw comparisons and understand where they sit in relation to the other options which are available. There are 8 levels plus entry level, with the higher levels offering the highest difficulty.

Find out more about the different levels at www.gov.uk/what-different-qualification-levels-mean
 Visit nationalcareers.service.gov.uk for information about careers, training and work.



HM Government



Start planning. Think about your career choices.

Use your experiences to think about your likes, dislikes, strengths and interests.

Use your predicted grades, interests, learning styles and career plans to help make your choices.

February half-term – aim for all students to have made applications.

Make sure you have a backup plan!

Have you received an offer for the options you want to do after Year 11? If not, phone your provider! Or speak to your Careers Adviser if you need more help!

If you are still unsure about what you are going to do, then speak a Careers Adviser.

AUTUMN TERM

SPRING TERM

SUMMER TERM

Attend open events.

These have been sent home and are regularly advertised on our FB (handouts available tonight).

Parents/Carers
You can arrange for you and your child to go on a personal tour.

Prepare for college / apprenticeship interviews. Interview start as soon as applications have been made.

If considering an Apprenticeship, make sure you register on:
<https://www.gov.uk/apply-apprenticeship>.

Check when you have to enrol/your first day is and think about travel. If looking for work or apprenticeships and you haven't found a place yet, ensure you have a backup plan.

RESULTS DAY – Contact Post-16 provider to confirm results. Didn't get the results you need? Speak to your school or your Careers Adviser for more help.

Attend small group and 1 to 1 interview with your Careers Adviser.
(You can start applying NOW!)
If you are struggling, ask your form tutor to arrange a priority appointment.



EFFORT



KINDNESS



COMMUNITY



School



Independent Advice & Guidance

- **Careers Hub CloS**
- **Talking Futures**
- **Our Careers and Aspirations Co-Ordinator – Helen Ireland – hireland@tpacademytrust.org**
- **School website**

Empowering students to achieve their best through academic excellence, personal growth, and a vibrant, caring community.